

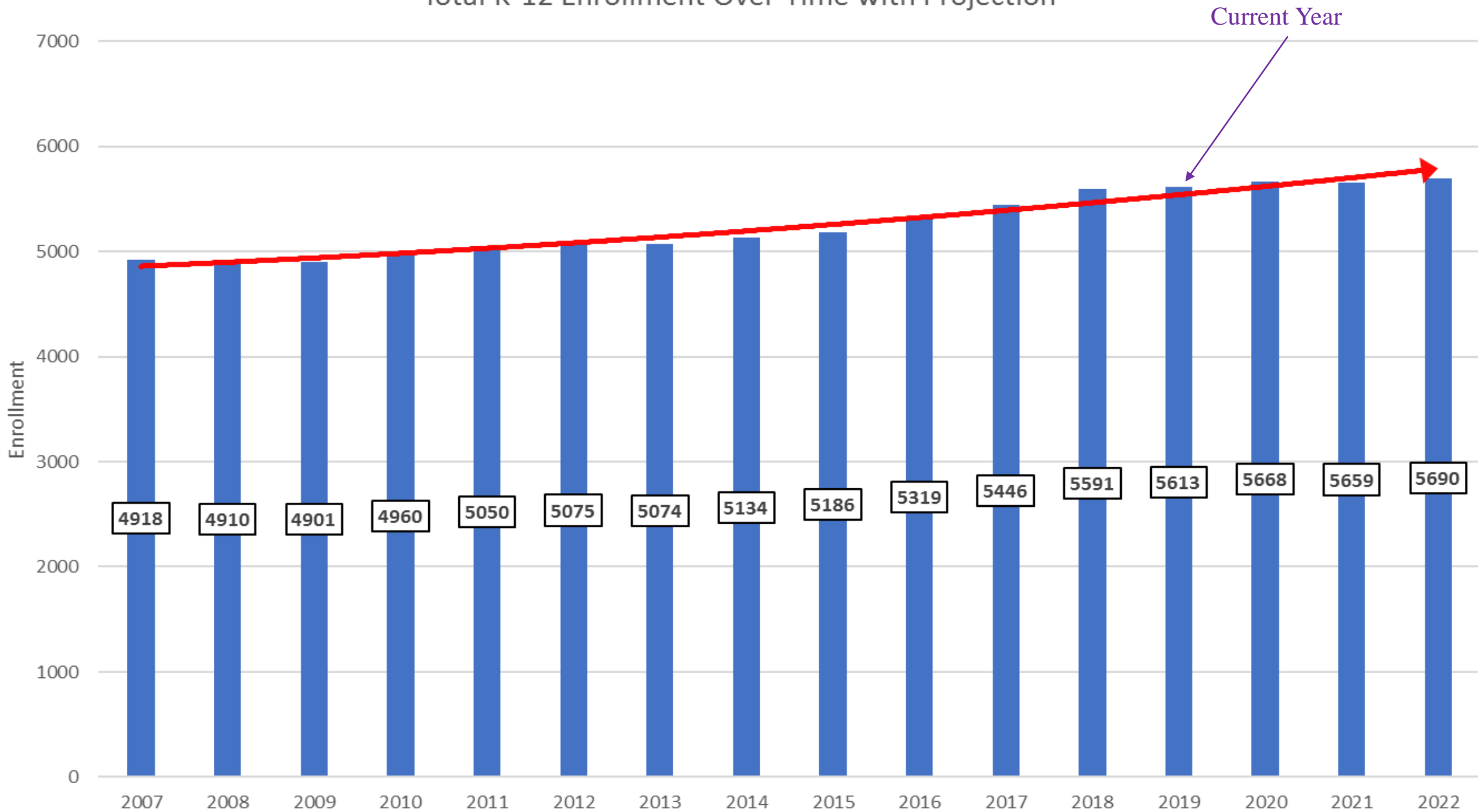
Enrollment Update

Board of Education Regular Business Meeting
Tuesday, September 4, 2018

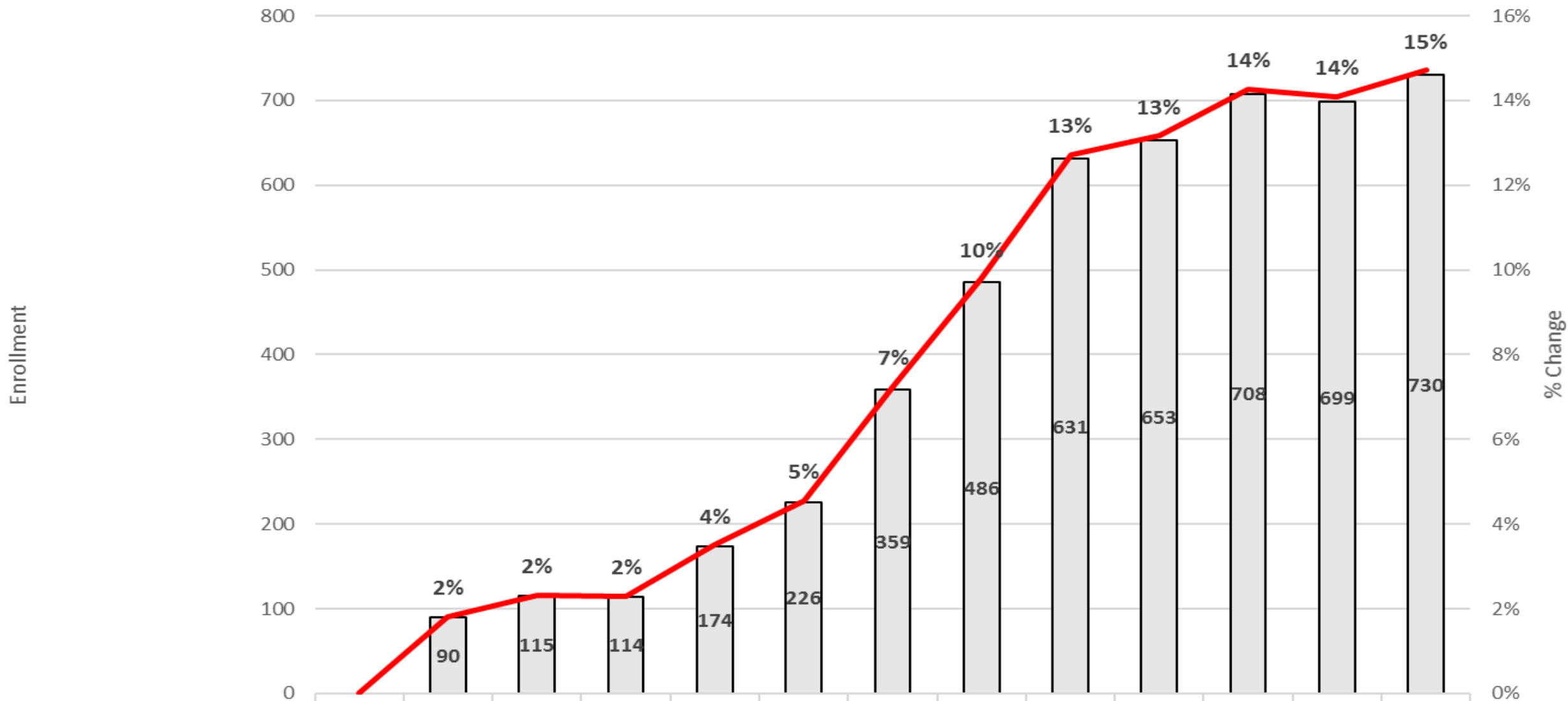
Kindergarten Historical and Projected Enrollment 2008-2022



	History (Fiscal Year)											Current	Projected (Fiscal Year)		
	2008	2009	2010	2011	2012	2013	2014	2015	2016	2017	2018	2019	2020	2021	2022
Total Live births	373	416	375	366	354	336	328	342	332	351	327	297	337	282	305
Enrollment/Live Births Ratio	104.3%	99.0%	110.7%	104.9%	123.2%	117.0%	126.5%	115.2%	137.7%	126.2%	144.3%	128.0%	132.8%	132.8%	132.8%
KG Enrollment	389	412	415	384	436	393	415	394	457	443	472	379	448	375	406
Annual Change		5.6%	0.7%	-8.1%	11.9%	-10.9%	5.3%	-5.3%	13.8%	-3.2%	6.1%	-24.5%	15.3%	-19.5%	7.6%

Total K-12 Enrollment Over Time with Projection



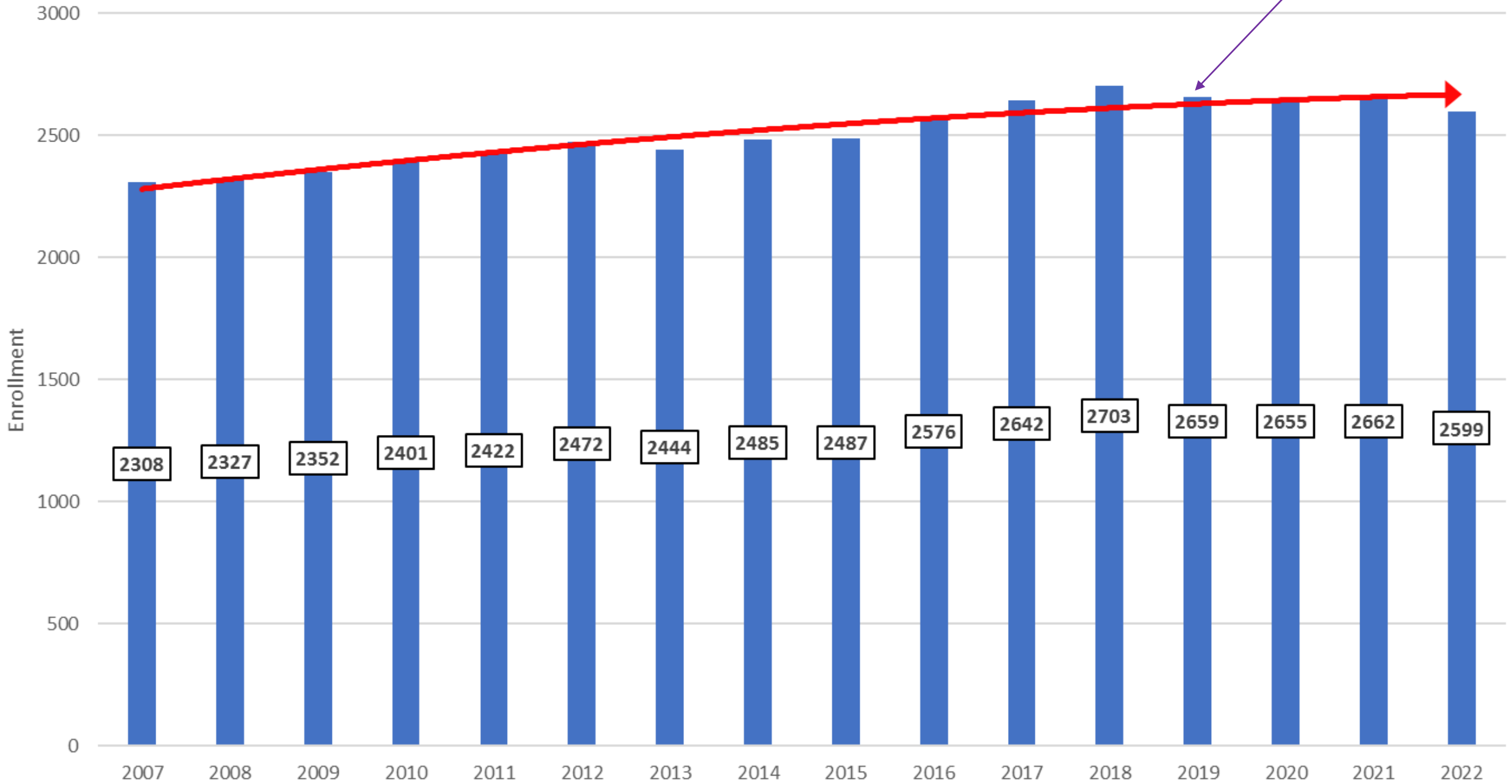
Change in District Enrollment 2010-2022



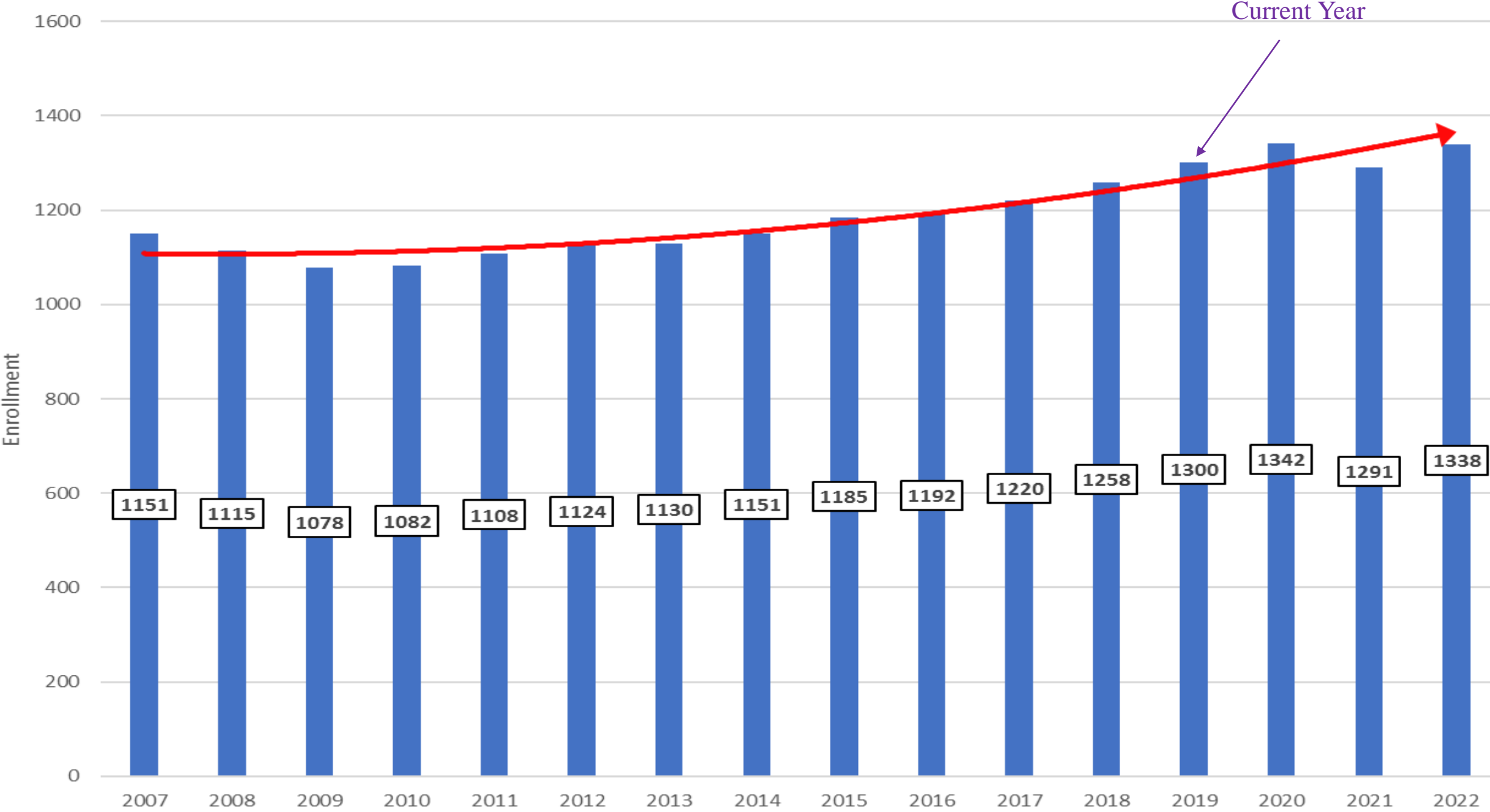
 Delta to 2010	2010	2011	2012	2013	2014	2015	2016	2017	2018	2019	2020	2021	2022
 → Rate Cumul. % Change	0%	2%	2%	2%	4%	5%	7%	10%	13%	13%	14%	14%	15%

 Delta to 2010  → Rate Cumul. % Change

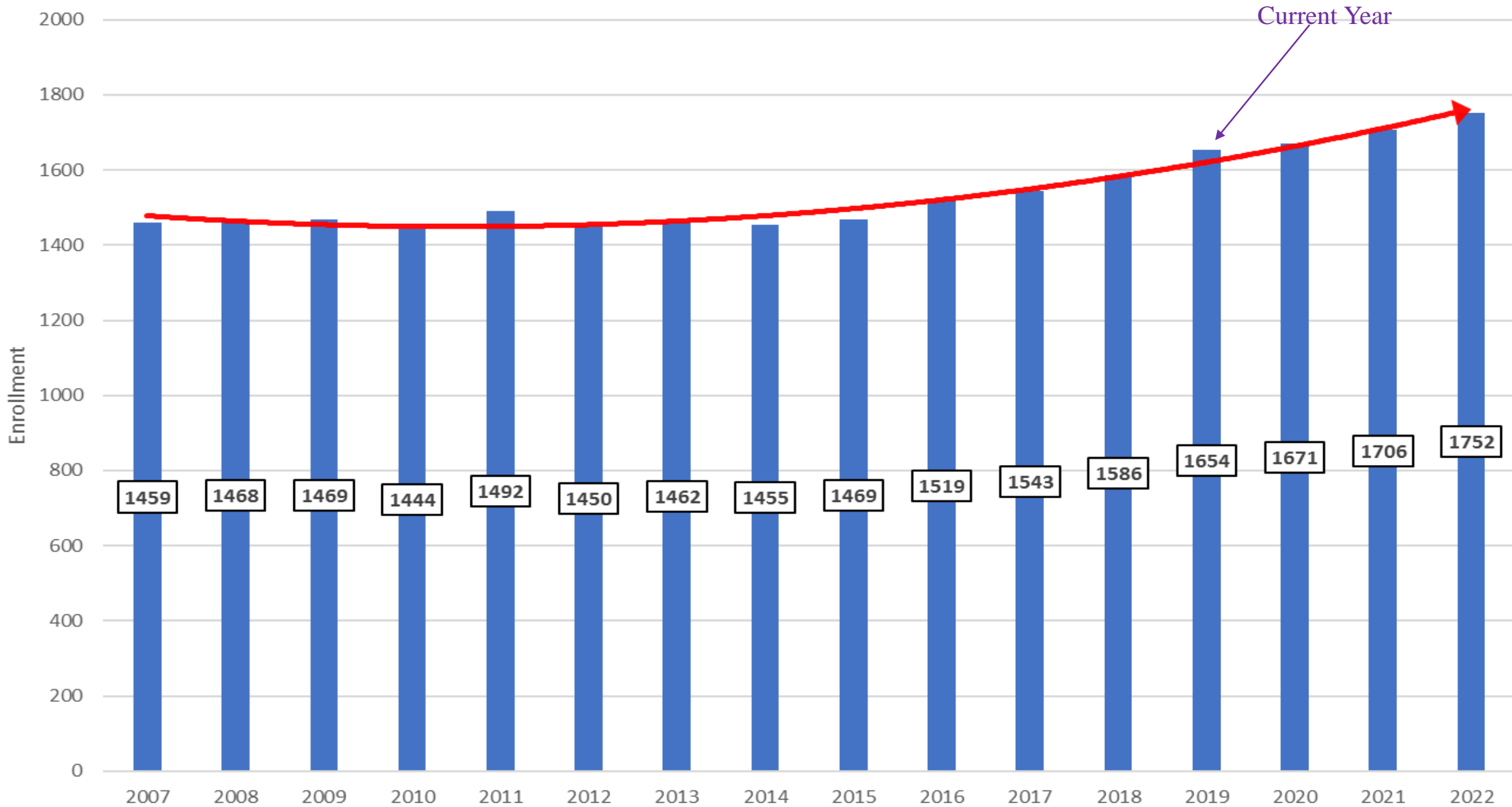
Total K-5 Enrollment Over Time with Projection



Total 6-8 Enrollment with Projection



Total 9-12 Enrollment Over Time with Projection



Change in Enrollment by School 2017-2018 to 2018-2019

School	September 2017	September 2018	% Change
Central School	512	510	-.039%
Chatsworth Ave School	727	698	-3.99%
Mamaroneck Ave School	726	702	-3.31%
Murray Ave School	749	749	0.00%
Hommocks Middle School	1279	1300	1.64%
Mamaroneck High School	1614	1654	2.48%
District	5607	5613	.11%

Grade/Section	1	2	3	4	5	6	Total
K	16	17	17	18			68
1st Gr	23	22	22	23			90
2nd Gr	20	19	20	20			79
3rd Gr	22	23	21	23			89
4th Gr	20	21	21	21			83
5th Gr	24	23	23	24			94

Grade/Section	1	2	3	4	5	6	Total
K	19	17	17	19	18		90
1st Gr	21	22	22	21	22	21	129
2nd Gr	22	21	21	22	22	22	130
3rd Gr	25	25	25	24	25		124
4th Gr	22	21	21	23	22		109
5th Gr	23	24	23	23	25		118

Class Size Averages by School

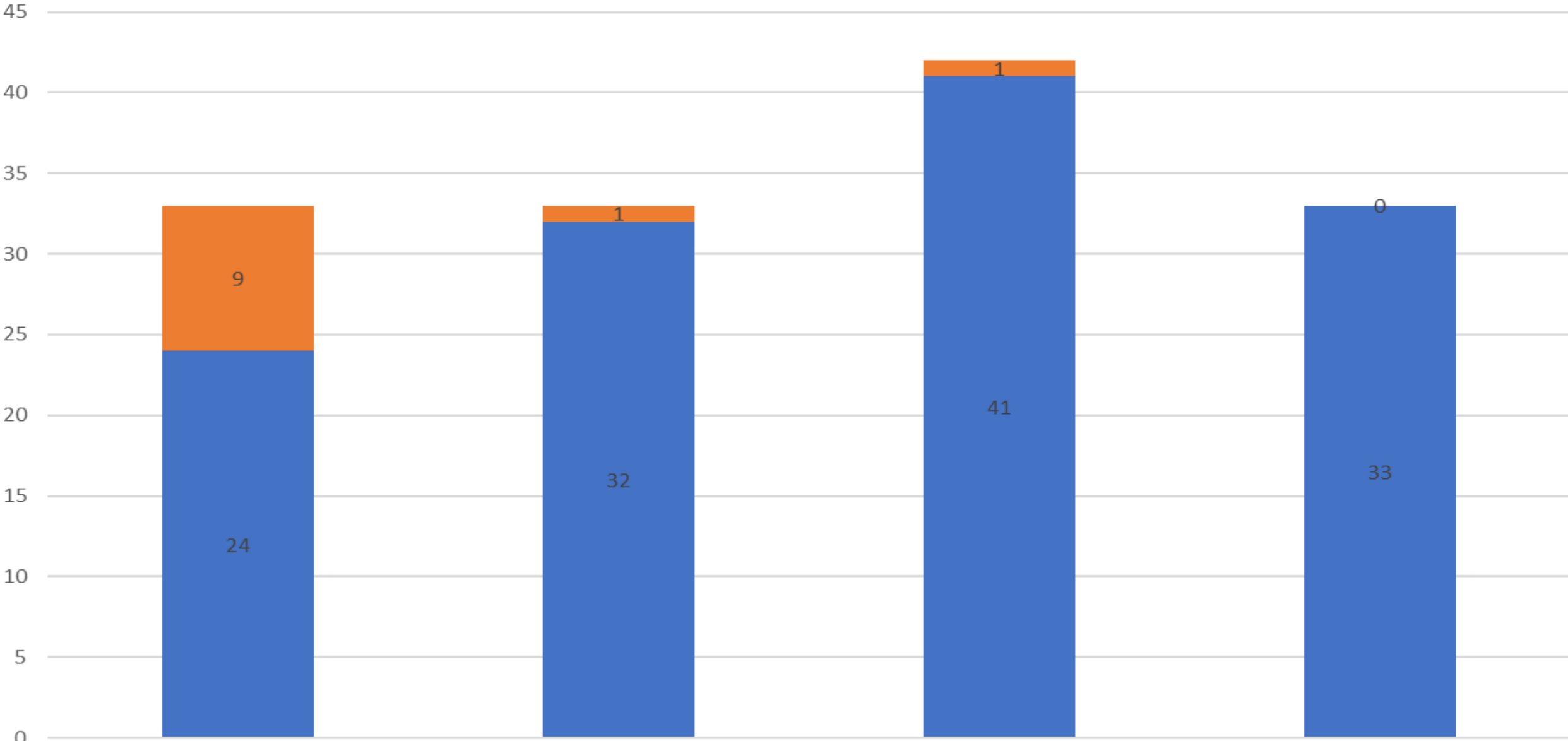
Central	Chats	MAS	MAS Dos Caminos	Murray
21	22	20	23	23

Grade/Section	1	2	3	4	5	6	Total
K	19	21	21				61
K Dos Caminos	24	24					48
1st Gr	17	19	18				54
1st Gr Dos Caminos	24	24	23				71
2nd Gr	24	24	22				70
2nd Gr Dos Caminos	22	24					46
3rd Gr	19	21	17	20			77
3rd Gr Dos Caminos	23	23					46
4th Gr	21	19	19				59
4th Gr Dos Caminos	19	21					40
5th Gr	22	21	22	21			86
5th Gr Dos Caminos	21	21					42
MultiGrade	5	5	5	7	4	10	36

Grade/Section	1	2	3	4	5	6	Total
K	19	18	19	19	18	20	113
1st Gr	22	21	22	22	21	22	130
2nd Gr	24	24	24	23	21		116
3rd Gr	25	26	25	25	25		126
4th Gr	26	26	26	26			104
5th Gr	23	23	24	23	23	23	139

District K-5

Elementary Classrooms



■ Currently Full Class ■ Potential Full Class